

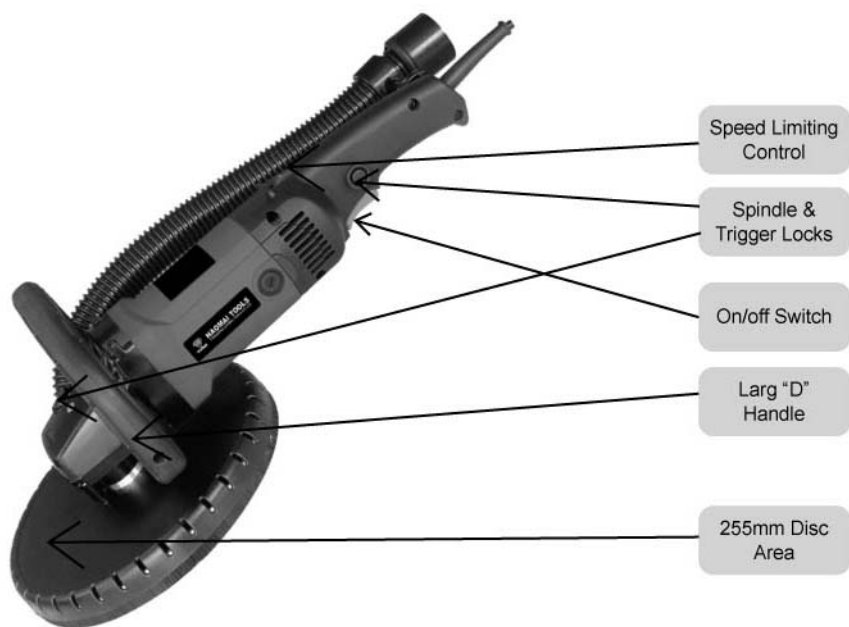
# ELECTRIC DRYWALL SANDER

MODEL: 690D



For your personal safety,  
READ and UNDERSTAND before using.

**SAVE THESE INSTRUCTIONS FOR FUTURE REFERENCE.**



Model	690D
Voltage	110V / 60Hz or 230V / 50Hz
No load speed	650 ~2500/min
Power input	800W
Sanding disc diameter	225mm
Net weight	3.0 kg

## GENERAL SAFETY RULES

**WARNING! Read and understand all instructions.** Failure to follow all instructions listed below, may result in electric shock, fire and / or serious personal injury. The term "power tool" in all of the warnings listed below refers to your mains-operated (corded) power tool.

### SAVE THESE INSTRUCTIONS.

#### Work area safety

**Keep your work area clean and well lit.** Cluttered worksites and dark areas invite accidents.

**Do not operate power tools in explosive atmospheres, such as in the presence of flammable liquid, gases, or dust.** Power tools create sparks which may ignite the dust or fumes.

**Keep bystanders, children, and visitors away while operating a power tool.** Distractions can cause you to lose control.

#### Electrical Safety

**Grounded tools must be plugged into an outlet properly installed and grounded in accordance with all codes and ordinances. Never remove the grounding prong or modify the plug in any way. Do not use any adaptor plugs. Check with a qualified electrician if you are in doubt as to whether the outlet is properly grounded.** If the tools should electrically malfunction or break down, grounding provides a low resistance path to carry electricity away from the user.

**Avoid body contact with grounded surfaces such as pipes, radiators, ranges and refrigerators.** There is an increased risk of electric shock if your body is grounded.

**Don't expose power tools to rain or wet conditions.** Water entering a power tool will increase the risk of electric shock.

**Don't abuse the cord. Never use the cord to carry the tools or pull the plug from an outlet. Keep cord away from heat, oil, sharp edges or moving parts. Replace damaged cords immediately.** Damaged cords increase the risk of electric shock.

**When operating a power tool outside, use an outdoor extension cord marked "W-A" or "W."** These cords are rated for outdoor use and reduce the risk of electric shock.

## Personal Safety

**Stay alert, watch what you are doing and use common sense when operating a power tool. Do not use tool while tired or under the influence of drugs, alcohol, or medication.** A moment of inattention while operating power tools may result in serious personal injury.

**Use safety equipment. Always wear eye protection.** Safety equipment such as dust mask, non-skid safety shoes, hard hat, or hearing protection used for appropriate conditions will reduce personal injuries.

**Avoid accidental starting. Be sure switch is off before plugging in.** Plugging in tools that have the switch on invites accidents.

**Remove adjusting keys or switches before turning the tool on.** A wrench or a key that is left attached to a rotating part of the tool may result in personal injury.

**Do not overreach. Keep a proper footing and balance at all times.** Proper footing and balance enables better control of the tool in unexpected situations.

**Dress properly. Do not wear loose clothing or jewelry. Keep your hair, clothing and gloves away from moving parts.** Loose clothes, jewelry or long hair can be caught in moving parts.

## Tool use and care

**Do not force tool. Use the correct tool for your application.** The correct tool will do the job better and safer at the rate for which it is designed.

**Do not use tool if switch does not turn it on or off.** Any tool that cannot be controlled with the switch is dangerous and must be repaired.

**Disconnect the plug from the power source before making any adjustments, changing accessories, or storing the tool.** Such preventive safety measures reduce the risk of starting the tool accidentally.

**Store idle tools out of reach of children and do not allow persons unfamiliar with the power tool or these instructions to operate the power tool.** Tools are dangerous in the hands of untrained users.

**Maintain tools with care.** Properly maintained tools are less likely to bind and are easier to control.

Check for misalignment or binding of moving parts, breakage of parts, and any other condition that may affect the tools operation. If damaged, have the tool serviced before using. Many accidents are caused by poorly maintained tools.


Use the power tool, accessories and blades etc., in accordance with these instructions and in the manner intended for the particular type of power tool, taking into account the working conditions and the work to be performed. Use of the power tool for operations different from those intended could result in a hazardous situation.

## Service

Have your tool serviced by a qualified repair person using only identical replacement parts. This will ensure that the safety of the power tool is maintained.

**-WARNING-** To reduce the risk of injury, user must read instruction manual.

## Symbols used in this manual

V.....volts  
A.....amperes  
Hz.....hertz  
W.....watt  
~.....alternating current  
n<sub>0</sub>.....no load speed  
/min.....revolutions or reciprocation per minute  
.....class II tool

## SPECIFIC SAFETY RULES

- 1 Keep hands away from rotating sanding head area at all times!**
- 2 Prolonged breathing of airborne dust from drywall sanding may effect respiratory function:**  
Always use a vacuum cleaner with a bag approved for drywall dust installed.  
Always wear a respirator approved for dust and mist.
- 3 Sanding LEAD-BASED paint is extremely toxic and should not be attempted.** Only allow professionals with special training and equipment perform this task.
- 4 Maintain proper footing and balance at all times.** Do not overreach. Use proper scaffolding
- 5 Always wear appropriate safety equipment when operating.**

- 6 **Important: After completing sanding**, switch off the switch and wait for the coasting sanding head to stop completely before putting the tool down.
- 7 **Never operate** the tool in an area with flammable solids, liquids, or gases. Sparks from the commutator/carbon brushes could cause a fire or explosion.
- 8 **There are certain applications for which this tool was designed.** The manufacturer strongly recommends that this tool NOT be modified and/or used for any application other than for which it was designed. If you have any questions relative to its application DO NOT use the tool until you have written the manufacturer and have been advised.
- 9 **Use the machine with both hands at all times.** Loss of control can cause personal injury.
- 10 **Keep power supply cord clear from the working range of the machine.** Always lead the cable away behind you.
- 11 **Immediately switch off the machine if unusual vibrations or if other malfunctions occur.** Check the machine in order to find out the cause.
- 12 **The dust that arises when working with this tool can be harmful to health.** Use a dust absorption system and wear a suitable dust protection mask and remove deposited dust with a vacuum cleaner.

## FUNCTIONAL DESCRIPTION

This Electric Drywall Sander is specially designed for the most efficient sanding of drywall or plaster walls and ceilings for both new construction and renovation work. It is designed to work in conjunction with a vacuum cleaner for minimum dust and best sanding results. The pivoting sanding head allows excellent results with minimum time and effort.

## Electrical connection

The network voltage must conform to the voltage indicated on the tool name plate. Under no circumstances should the tool be used when the power supply cable is damaged. A damaged cable must be replaced immediately by an authorized Customer Service Center. Do not try to repair the damaged cable yourself. The use of damaged power cables can lead to an electric shock.

## Extension cable

If an extension cable is required, it must have a sufficient cross-section so as to prevent an excessive drop in voltage or overheating. An excessive drop in voltage reduces the output and can lead to failure of the motor. The following table shows

you the correct cable diameter as a function of the cable length for this machine. Use only U.L. and CSA listed extension cables. Never use two extension cables together. Instead, use one long one.

<b>Total Extension Cord Length (feet)</b>	<b>Cord Size (AWG)</b>
<b>25</b>	<b>16</b>
<b>50</b>	<b>12</b>
<b>100</b>	<b>10</b>
<b>150</b>	<b>8</b>
<b>200</b>	<b>6</b>

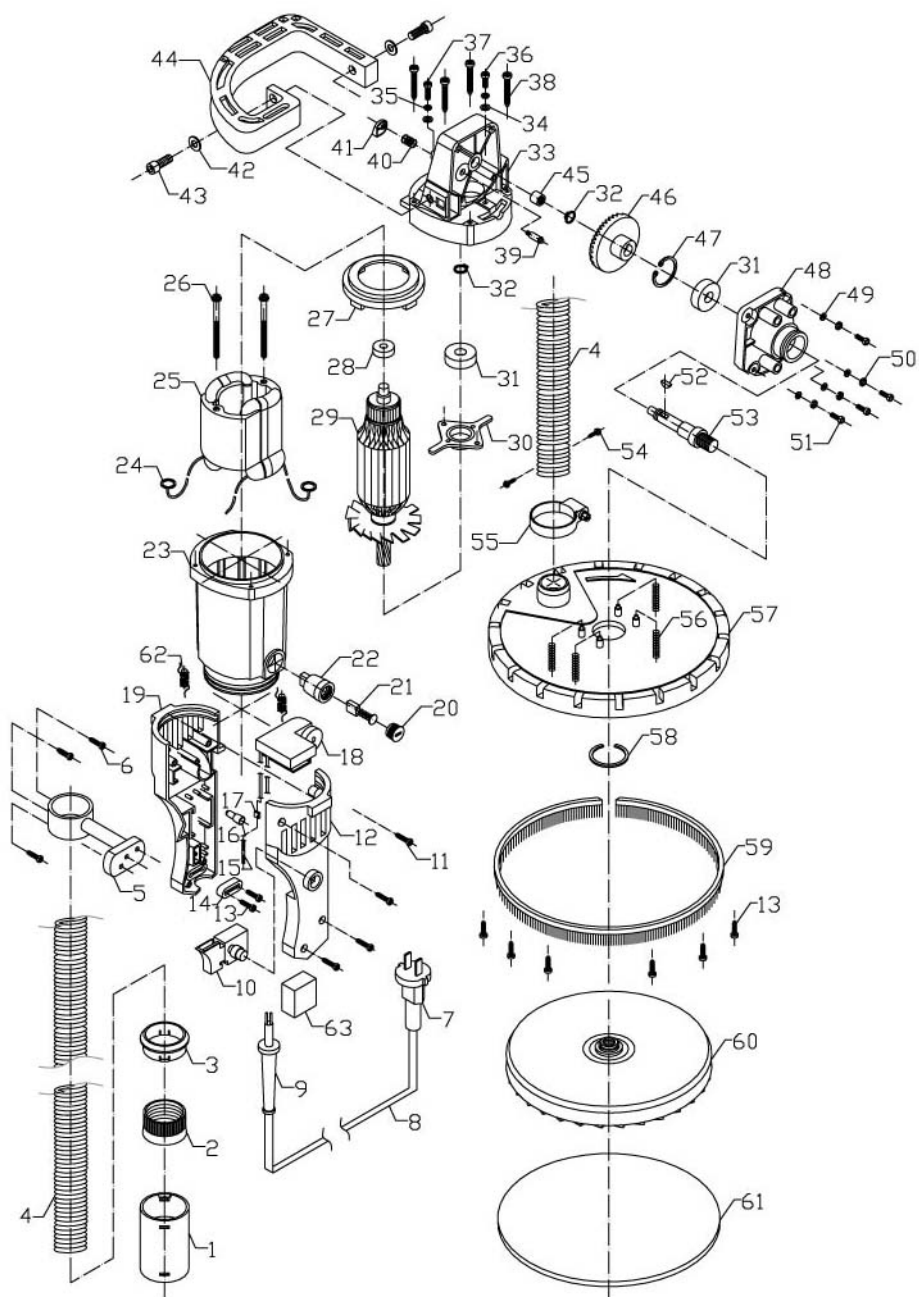
## **UNPACKING**

Carefully remove the tool and all loose items from the shipping container. Retain all packing materials until after you have inspected and satisfactorily operated the machine.

## **CARTON CONTENTS**

1. Drywall Sanding Machine
2. Vacuum cleaner hose
3. 6PCS different grits sandpaper
4. Instruction manual

**DO NOT OPERATE THIS TOOL UNTIL YOU READ AND UNDERSTAND THE ENTIRE INSTRUCTION MANUAL**





## PARTS LIST

NO.	Parts name	QTY	NO.	Parts name	QTY
1	Hose connector	1	33	Gear case	1
2	Swivel connector	1	34	Flat washer M5	2
3	Hose clip	1	35	Spring washerM5	2
4	Vacuum hose	1	36	ScrewM5*12	1
5	Hose bracket	1	37	ScrewM5*16	1
6	Screw 4*12	3	38	Screw 5*35	4
7	Plug	1	39	Holding pin	1
8	Electrical wire	1	40	Spring $\varnothing 8.7 \times 12.5$	1
9	Cord armor	1	41	Screw	1
10	on/off switch	1	42	Flat washer	2
11	Screw 4*16	4	43	screw M8*20	2
12	Right handle cover	1	44	Bail handle	1
13	Screw 4*14	8	45	Ball bearing	1
14	Cable clip	1	1	Big gear	1
15	Wire connector	1	47	Internal circlip	1
16	Bushing	1	48	Gear cover	1
17	Wire leader	1	49	Flat washerM4	4
18	Thumb wheel	1	50	Spring washerM4	4
19	Left handle cover	1	51	Screw M4*12	4
20	Brush cover	2	52	Parallel key	1
21	Carbon brush	2	53	Spindle	1
22	Carbon brush holder	2	54	Screw 3*10	2
23	Motor housing	1	55	Hose clip	1
24	Spring	1	56	Spring $\varnothing 6.5 \times 31$	4
25	Stator	1	57	Sanding plate cover	1
26	Screw M5*65	2	58	Circlip	1
27	Plastic washer	1	59	Nylon brush	1
28	Bearing	1	60	Adhibit tray	1
29	Armiture	1	61	Sandpaper	1
30	Pivot base	1	62	inductance	2
31	Bearing	2	63	capacitance	2
32	External circlip	2	64		